



Romilly Newsletter

Edition 8 - Friday 9th February 2024

Attendance Update

Whole school attendance target: 95%

Attendance for each year group for 29/01/24 – 02/02/24:

Reception	93%
Year 1	92%
Year 2	94%
Year 3	90%
Year 4	92%
Year 5	92%
Year 6	93%

Sadly no year group met our target of 95% last week

Late Children: 36

Number of 'U' marks (Late after registers have closed): 10

Our gates close promptly at 08:55am. Arrival after this time means your child has missed the register and will receive a late mark. If your child arrives after this time, they will be asked to wait with school staff who will take them to their classrooms. If your child likes you to take them to their class, please ensure you arrive before 08:55am to minimise any distress to them. Our gates open at 08:40am to allow plenty of time for this.

Remember attending school every day has a significant impact on your child's education and overall development. Research consistently shows that pupils with good attendance tend to achieve better academically, have stronger social skills, and develop a stronger work ethic.

We value the collaboration between parents and the school. If your child is going to be absent, please ensure that you notify us as soon as possible. Our attendance records play a vital role in monitoring their progress and well-being

Please don't hesitate to reach out to us if you have any concerns or questions regarding attendance.

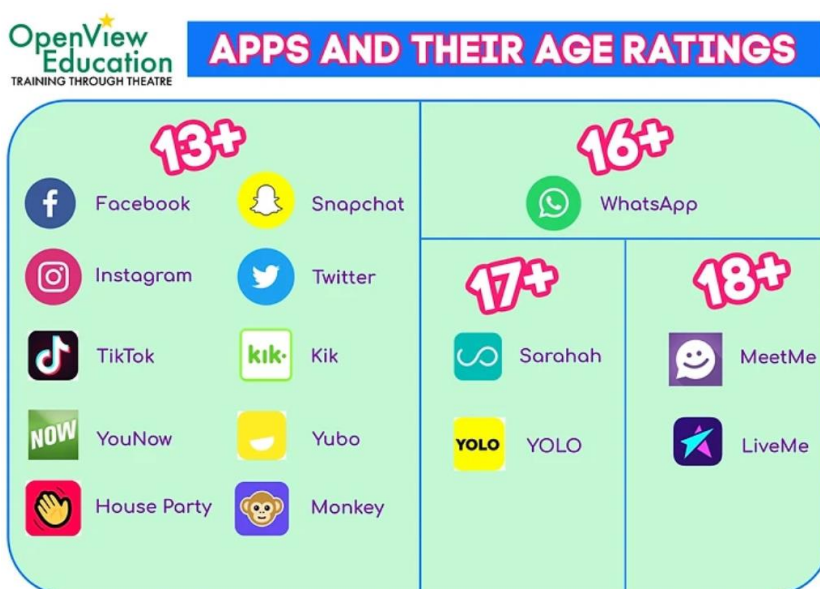
Please remember the end of the day is just as important as the beginning of the day. School finishes at 3:30pm and children should only be picked up early in exceptional circumstances, or with permission from the Senior Leadership Team.

Welsh Phrase of the Week

Our Welsh phrase of the week we will be practicing in school after half term is:

Dw i'n byw yn y Barri which means **I live in Barry**

Online Safety



As part of our commitment to providing a safe and supportive learning environment, we want to take a moment to address the importance of online safety, particularly when it comes to apps, video games and the PEGI age ratings.

In today's digital age, where technology is an integral part of our lives, it is crucial that we, as educators and parents, work together to ensure the well-being of our children while they interact online. Video games have become a popular form of entertainment among young people, but it is essential to understand the content and age recommendations associated with them.

One game that has been a source of concern is Grand Theft Auto (GTA), which carries a PEGI rating of 18. This means that the game is intended for individuals aged 18 and above due to its mature content, including violence, strong language, and explicit themes. We strongly advise parents not to allow their children, who are under the age of 18, to play or engage with games that are rated 18+.

As educators, we believe in fostering responsible digital citizenship, and this includes educating our students about appropriate online behavior and the potential risks associated with certain types of content. We encourage you to have open and honest conversations with your child about the PEGI ratings and their significance, as well as setting clear boundaries regarding their online activities.

To further support you in this matter, we recommend using the PEGI age rating system as a valuable resource. PEGI ratings provide guidance on the suitability of games for different age groups, ranging from 3 to 18 years old. By familiarizing yourself with these ratings, you can make informed decisions about the games your child is playing and ensure their online experiences align with their age and maturity level.

Please also take note of the age ratings for popular apps.

Additionally, we urge you to regularly monitor your child's online activity, including the games they play, who they interact with, and the content they consume. It is advisable to enable parental controls on gaming devices and platforms to help restrict access to inappropriate content and limit gaming time if necessary.

Should you require any further guidance or support in this matter, please do not hesitate to contact us. We are here to work together to promote a safe and secure online environment for our pupils. Together, we can help empower our children to make responsible choices and develop essential digital literacy skills.

Safeguarding - Who to contact if you have a concern about a child

If you are worried about a child's safety please do not hesitate to contact any of the Designated Safeguarding Leads straight away. The following members of staff are Designated Safeguarding People (DSP) for Romilly Primary School:

- Miss N Williams (Lead DSP)
- Miss K Williams (Deputy DSP)
- Mrs E Durrant (Deputy DSP)
- Mrs D Lee (Deputy DSP)
- Miss R Gould (Deputy DSP)
- Our school governor for safeguarding is: Emma Davies-Powell.



The above DSP's can be contacted via the school office, or by telephone on 01446 736934. For a copy of our school's Child Protection and Safeguarding Policy, please visit our 'safeguarding' page on our school website.

What is Safeguarding?

Safeguarding refers to the process of protecting children from harm and ensuring their well-being. It encompasses various measures to prevent abuse, promote their safety, and support their development. Safeguarding encompasses not only physical protection but also emotional and mental well-being.

Our Commitment to Safeguarding

Here at Romilly, we prioritise the safety and welfare of our pupils. We have a comprehensive safeguarding policy in place, which outlines the procedures and protocols we follow to ensure a safe and secure environment for all. Our staff members are regularly trained on safeguarding matters to ensure they are equipped to identify potential risks and take appropriate action.

Your Role as Parents

We believe that safeguarding is a shared responsibility between the school and parents. Your role in ensuring your child's safety is crucial. We encourage you to maintain open lines of communication with us and promptly inform the school of any concerns you may have regarding your child's well-being.

Thank you for your continued support as we work together to ensure the safety and well-being of all our pupils.

Healthy Lunchbox Ideas!

Raid the store cupboard for this easy lunchbox pasta salad. Combine cooked pasta with a few tablespoons of pesto, Greek yogurt and mayonnaise. Add any fresh veggies you have to hand, cherry tomatoes and some leftover protein – chicken, ham, hard-boiled eggs and prawns all taste great. Top with some cheddar, for extra flavour.



Cost of Living Crisis

Help with Cost of Living Crisis

We would like to address a pressing issue that has been affecting many families across Wales: the cost of living crisis. With rising expenses and economic challenges, it is important for us to come together and support one another during these difficult times.

As educators, we understand that providing your children with the best possible education is a priority for you. We also recognize that financial hardships can sometimes hinder your ability to meet all the expenses associated with your child's education. Hence, we would like to provide you with some helpful links and resources that may alleviate some of the financial burdens you may be facing:

The Welsh Government has a comprehensive page dedicated to the support that is available for the people in Wales with the cost of living crisis. <https://www.gov.wales/help-cost-living>

Discretionary Assistance Fund (DAF): The DAF is a Welsh Government scheme that offers financial support to individuals and families who are experiencing financial difficulties. They provide grants and emergency payments to help cover essential costs such as food, clothing, and heating. You can find more information about DAF and how to apply on their website, <https://www.gov.wales/discretionary-assistance-fund-daf/eligibility>

Free School Meals: All Primary School pupils in the Vale of Glamorgan are eligible for a free school meal. This can significantly reduce the strain on your family budget. Please reach out to our school office for assistance if you need help setting this up or ordering a meal.

Citizens Advice: Citizens Advice is an independent charity that offers free, confidential advice on a wide range of issues including money, housing, and benefits. They can provide guidance on managing your finances, navigating the benefits system, and accessing additional support. You can find your local Citizens Advice office and more information on their website, <https://cacv.org.uk/contact/our-locations/vale-of-glamorgan/>

Depending on your circumstances, you may be entitled to pay less Council Tax. You may be entitled to a discount if you live in a low-income household, you receive Universal Credit, you are disabled or if you are a student. Advice Link Cymru can help you check what you are entitled to. The helpline is free and confidential - 0800 250 5700

The Vale Food Bank may be able to help you. They ask that in the first instance you contact either Citizens Advice on 01446 732108 or Pobl on 01446 732876 who will be able to talk through your circumstances and may be able to issue a voucher or advise you further.

We understand that discussing financial challenges can be uncomfortable, but please be assured that we are here to support you and your child in any way we can. If you require further assistance or have any concerns, please do not hesitate to contact us. We respect your privacy and confidentiality, and will treat all discussions with the utmost discretion and respect.

In addition to these external resources, our school is committed to creating an inclusive and supportive environment for all our pupils. We have implemented various measures to ensure that no child feels excluded or disadvantaged due to financial circumstances. If you have any specific concerns regarding your child's education or any assistance they may require, please feel free to arrange a meeting with their class teacher or the school's senior leadership team.

We want to reiterate that we are here to support you and your family during this challenging period. Please do not hesitate to reach out to us if you need any further assistance or have any questions. Together, we will ensure that every child can thrive in their educational journey.

PE Timetable 2024

Week commencing 05/02/24

Tuesday 6th February - Year 1

Wednesday 7th February - Reception

Thursday 8th February - Year 2

CHANGE TO YEAR GROUPS

Week commencing 19/02/24

Monday 19th February - Year 5

Tuesday 20th February - Year 4

Wednesday 21st February - Year 6

Thursday 22nd February - Year 3

Week commencing 26/02/24

Tuesday 27th February - Year 2

Wednesday 28th February - Reception

Thursday 29th February - Year 1

Dates for your Diary

February

Monday 12th February - Friday 16th February - Half Term

Thursday 22nd February - Aladdin ticket sales for Year 2 & KS2 at 5pm, Canteen

Friday 23rd February - Aladdin tickets on sales for Year 2 & KS2 at 3:45pm, Canteen

March

Monday 11th March - Thursday 14th March - Parents Evening (Reception - Year 6) further information to be sent home shortly. Nursery dates to follow.

Sunday 17th March - Extra drama rehearsal for KS2
3:00pm - 5:00pm

Monday 18th March - Extra drama rehearsal for KS2
3:30pm - 5:00pm

Tues 19th March & Wed 20th March - Year 2 drama show at 4:15pm - Aladdin

Tues 19th March, Wed 20th March & Thurs 21st March - Key stage 2 drama show at 6:00pm - Aladdin

Monday 25th March - Friday 5th April - Easter Holidays

May

Friday 24th May - INSET - school closed to all children

Monday 27th May - Friday 31st May - Half term